

# INNERMOST SECRETS

## Testing for Down Syndrome

### Nuchal Translucency Scan

Traditional screening for Down Syndrome based on the Triple Test at 15-16 weeks only picks up 60% of babies with Down Syndrome and none with Edward Syndrome or Patau Syndrome.

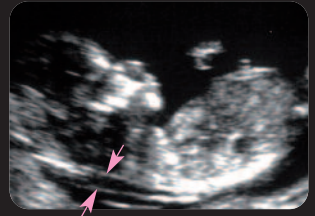
The Triple Test is widely available on the NHS but is greatly influenced by maternal age with poor detection rates in younger women. Older women however are very likely to come up as “high risk” forcing them to make a decision about an amniocentesis.

The Nuchal Translucency Scan is based on an abdominal ultrasound scan to measure the amount of fluid underneath the skin at the back of the babies neck (**Nuchal Translucency**) and a blood test to measure two hormones in the mothers blood (B-hCG and PAPP-A).

The final results from the scan and blood test will be available within a week by phone followed by a written report sent to patient, GP and hospital.

The scan also identifies babies at increased risk of heart problems and works for multiple pregnancies.

**90% detection for Down Syndrome based on a scan and a blood test at 11+4wks to 13+6 wks.**



## Quad Test

The Quad Test is based on a blood test to measure the same three hormones used in the Triple Test (AFP, B-hCG, Oestriol) and also a fourth hormone called Inhibin.

A scan is also performed as the interpretation of the hormone levels depends on the size of the baby.

The final result gives a risk for Down Syndrome. If the risk is better than 1 in 250 this is called "Low Risk" and no further testing is advised. If the risk is higher than 1 in 250 this is called "High Risk" and amniocentesis would be offered.

**85% detection for Down Syndrome based on a scan and a blood test at 14-22 wks.**

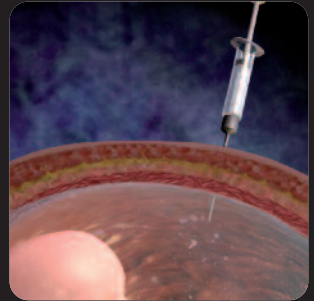


## Amniocentesis

This involves inserting a very fine needle under ultrasound guidance into the amniotic sac to take a sample of amniotic fluid to be tested for chromosomal abnormalities such as Down Syndrome or other conditions like Cystic Fibrosis.

Dr Bryan Beattie's amniocentesis miscarriage rate is about 1 in 300 compared to a national average of about 1 in 100.

**100% detection rate for Down Syndrome**



**Tel: 0345 2303386**

**[www.innermostsecrets.com](http://www.innermostsecrets.com)**