

INNERMOST SECRETS

Special Pregnancy Scans

4D Baby Bonding Scan

Traditional 2D ultrasound provides well recognised black and white moving images.

3D scans produce a picture which is much more recognisable like a statue which can be viewed from different angles.

4D scans produce lifelike images like a moving statue allowing parents to clearly see their baby smile, yawn, blink or swallow etc as they move inside their secret world.

Features such as the baby's face can be seen much more clearly than traditional ultrasound.

We also routinely perform a Growth and Wellbeing Scan to assess the baby's general health and growth, the amniotic fluid volume and the placental blood flow.

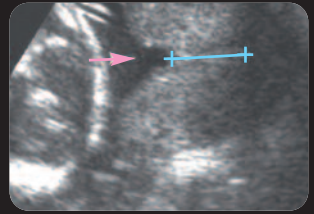
The DVD also includes a sound track from international composer Simon Cooper who has composed special music for unborn babies in the womb

4D scan around 26 weeks (24-34 weeks) with 20 minutes video recording on keepsake DVD and 4-6 colour photographs.



Cervical Scan

Transvaginal scans from 14 – 24 weeks can identify pregnancies at increased risk of late miscarriage, premature rupture of the membranes and premature delivery due to a weak cervix (cervical incompetence).

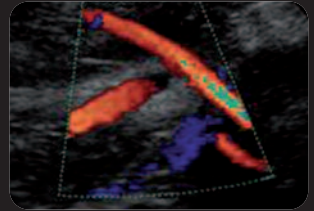


If the cervix is **short** or **opening / funelling**, as seen in the photo, a special stitch can be put around the cervix to keep it closed until the baby is ready to be delivered.

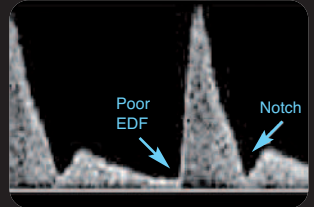
Identifies pregnancies at risk of late miscarriage and premature delivery

Uterine Artery Doppler Scan

An abdominal scan at 20 and 24 weeks can assess the blood flow in the Uterine Arteries which flow from the mother to the uterus.



Abnormal patterns such as poor end diastolic flow (EDF) in the second part of the cardiac cycle and deep notching in the waveform are associated with later development of pre-eclampsia and failing growth in the baby and such pregnancies can be monitored more closely.

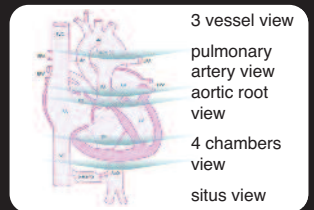


Identifies pregnancies at increased risk of pre-eclampsia and placental failure

5 View Cardiac Scan

Additional views of the heart and scanning at 24 rather than 20 weeks improves the detection of cardiac abnormalities.

Identifies more cardiac abnormalities



Tel: 0345 2303386

www.innermostsecrets.com